
Comfort-Care®

**Remote Controller
Owner Manual**

Casements

CD-81R01
CD-101R01



www.marsdelivers.com

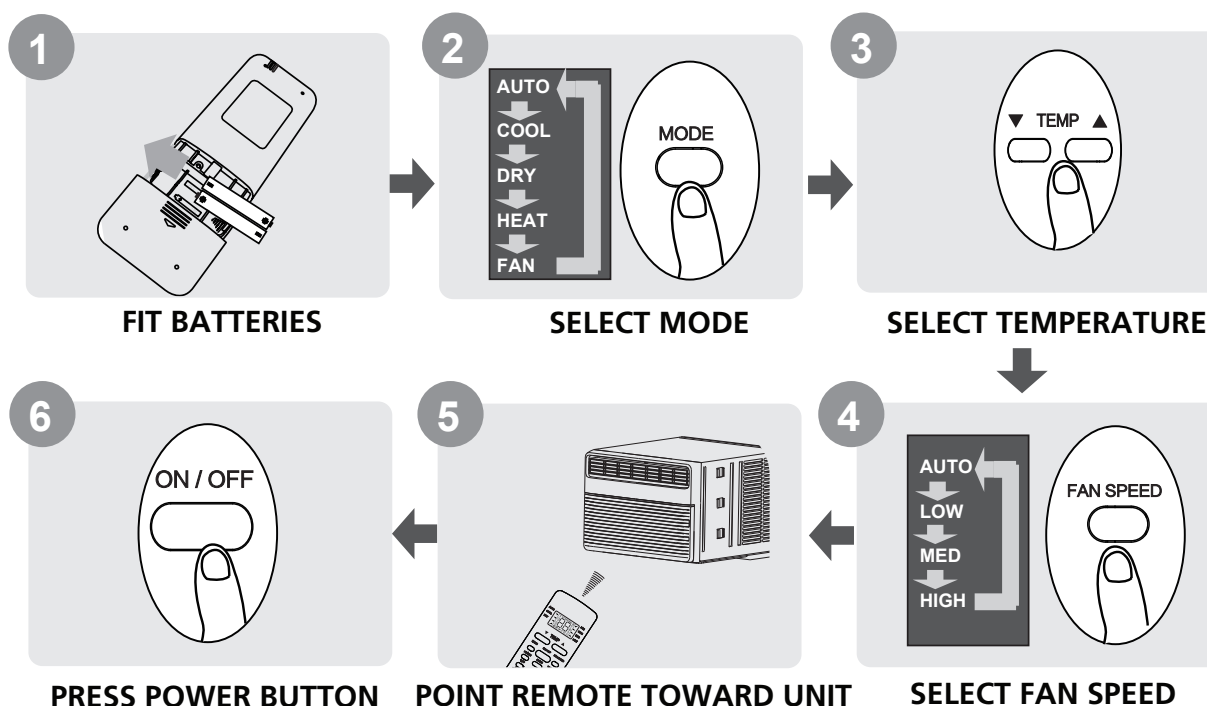
Table of Contents

Remote Controller Specifications	02
Handling the Remote Controller	03
Buttons and Functions	04
Remote Screen Indicators	08
How to Use Basic Functions	09
How to Use Advanced Functions	12

Remote Controller Specifications

Model	RG51G(1)/CEFU1, RG51G(1)/EFU1, RG51G1(1)/EFU1, RG51G4(1)/EU1, RG51G5(1)/EU1, RG51G4(1)/CEU1
Rated Voltage	3.0V(Dry batteries R03/LR03×2)
Signal Receiving Range	8m
Environment	23°F~140°F (-5°C~60°C)

Quick Start Guide



NOT SURE WHAT A FUNCTION DOES?

Refer to the **How to Use Basic Functions** and **How to Use Advanced Functions** sections of this manual for a detailed description of how to use your air conditioner.

SPECIAL NOTE

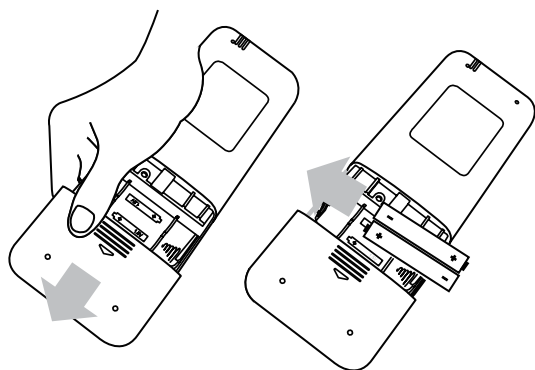
- Button designs on your unit may differ slightly from the example shown.
- If the indoor unit does not have a particular function, pressing that function's button on the remote control will have no effect.
- When there are wide differences between "Remote controller Manual" and "USER'S MANUAL" on function description, the description of "USER'S MANUAL" shall prevail.

Handling the Remote Controller

Inserting and Replacing Batteries

Your air conditioning unit may come with two batteries (some units). Put the batteries in the remote control before use.

1. Slide the back cover from the remote control downward, exposing the battery compartment.
2. Insert the batteries, paying attention to match up the (+) and (-) ends of the batteries with the symbols inside the battery compartment.
3. Slide the battery cover back into place.



! BATTERY NOTES

For optimum product performance:

- Do not mix old and new batteries, or batteries of different types.
- Do not leave batteries in the remote control if you don't plan on using the device for more than 2 months.



BATTERY DISPOSAL

Do not dispose of batteries as unsorted municipal waste. Refer to local laws for proper disposal of batteries.

TIPS FOR USING REMOTE CONTROL

- The remote control must be used within 8 meters of the unit.
- The unit will beep when remote signal is received.
- Curtains, other materials and direct sunlight can interfere with the infrared signal receiver.
- Remove batteries if the remote will not be used more than 2 months.

NOTES FOR USING REMOTE CONTROL

The device could comply with the local national regulations.

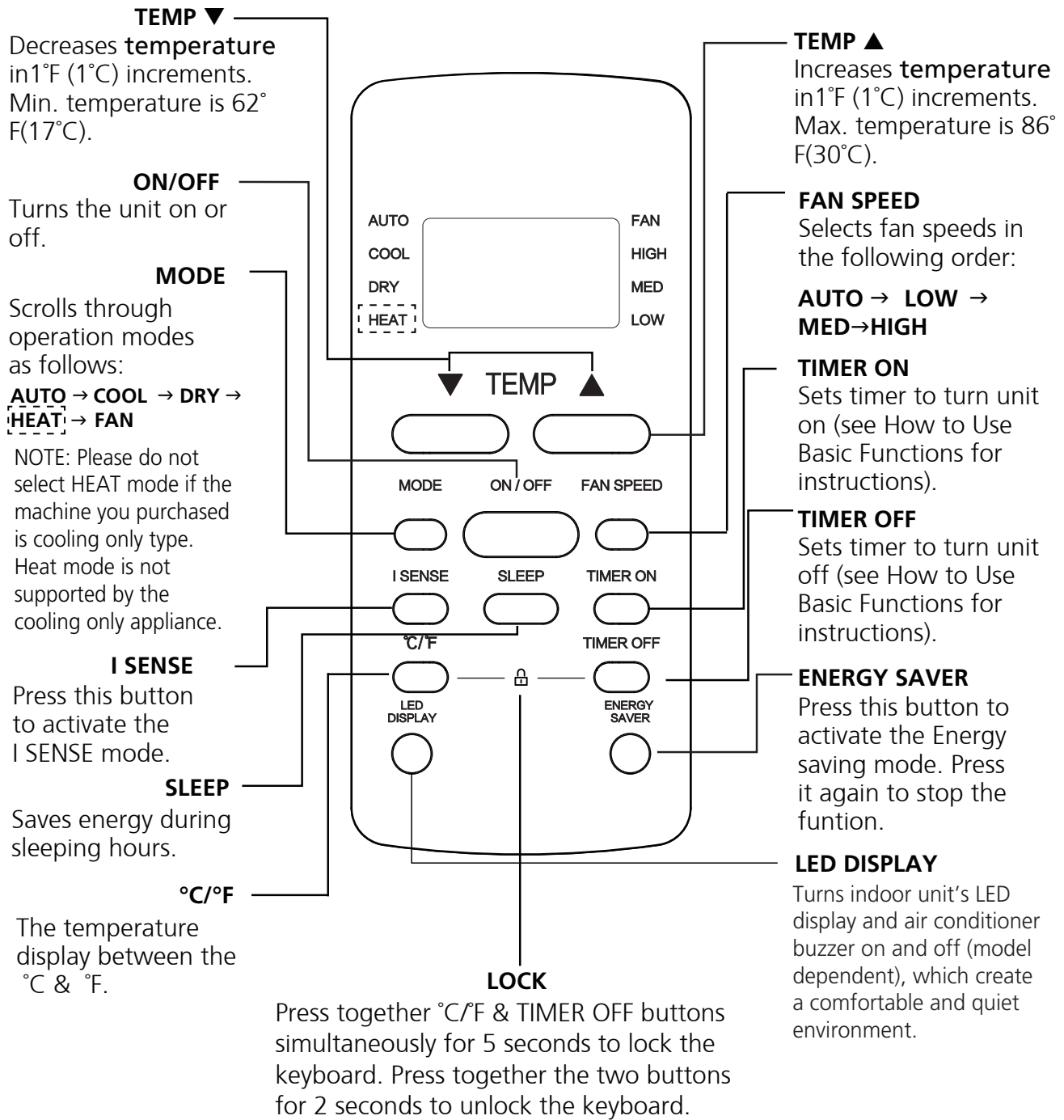
- In Canada, it should comply with CAN ICES-3(B)/NMB-3(B).
- In USA, this device complies with part 15 of the FCC Rules. Operation is subject to the following two conditions:
 - (1) This device may not cause harmful interference, and
 - (2) this device must accept any interference received, including interference that may cause undesired operation.

This equipment has been tested and found to comply with the limits for a Class B digital device, pursuant to part 15 of the FCC Rules. These limits are designed to provide reasonable protection against harmful interference in a residential installation. This equipment generates, uses and can radiate radio frequency energy and, if not installed and used in accordance with the instructions, may cause harmful interference to radio communications. However, there is no guarantee that interference will not occur in a particular installation. If this equipment does cause harmful interference to radio or television reception, which can be determined by turning the equipment off and on, the user is encouraged to try to correct the interference by one or more of the following measures:

- Reorient or relocate the receiving antenna. Increase the separation between the equipment and receiver.
- Connect the equipment into an outlet on a circuit different from that to which the receiver is connected.
- Consult the dealer or an experienced radio/TV technician for help.
- Changes or modifications not approved by the party responsible for compliance could void user's authority to operate the equipment.

Buttons and Functions

Before you begin using your new air conditioner, make sure to familiarize yourself with its remote control. The following is a brief introduction to the remote control itself. For instructions on how to operate your air conditioner, refer to the How to Use Basic Functions section of this manual.



Model: RG51G(1)/CEFU1
RG51G(1)/EFU1

NOTE: Model RG51G(1)/CEFU1 does not have HEAT feature.

TEMP ▼
Decreases temperature in 1°F (1°C) increments. Min. temperature is 62°F (17°C).

ON/OFF
Turns the unit on or off.

MODE
Scrolls through operation modes as follows:
AUTO → COOL → DRY → HEAT → FAN
NOTE: Please do not select HEAT mode if the machine you purchased is cooling only type. Heat mode is not supported by the cooling only appliance.

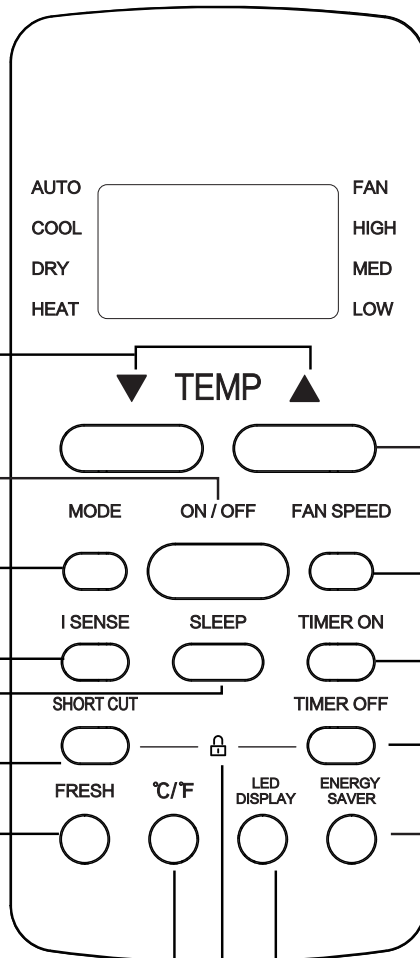
I SENSE
Press this button to activate the I SENSE mode.

SLEEP
Saves energy during sleeping hours.

SHORT CUT
Sets and activates your favorite pre-settings.

FRESH
Press this button to activate the FRESH function. Press it again to stop the function.

°C/°F
The temperature display between the °C & °F.



TEMP ▲
Increases temperature in 1°F (1°C) increments. Max. temperature is 86°F (30°C).

FAN SPEED
Selects fan speeds in the following order:
AUTO → LOW → MED → HIGH

TIMER ON
Sets timer to turn unit on (see How to Use Basic Functions for instructions).

TIMER OFF
Sets timer to turn unit off (see How to Use Basic Functions for instructions).

ENERGY SAVER
Press this button to activate the Energy saving mode. Press it again to stop the function.

LED DISPLAY
Turns indoor unit's LED display and air conditioner buzzer on and off (model dependent), which create a comfortable and quiet environment.

LOCK
Press together SHORT CUT & TIMER OFF buttons simultaneously for 5 seconds to lock the keyboard. Press together the two buttons for 2 seconds to unlock the keyboard.

RG51G1(1)/EFU1

TEMP ▼
Decreases **temperature** in 1°F (1°C) increments. Min. temperature is 62° F (17°C).

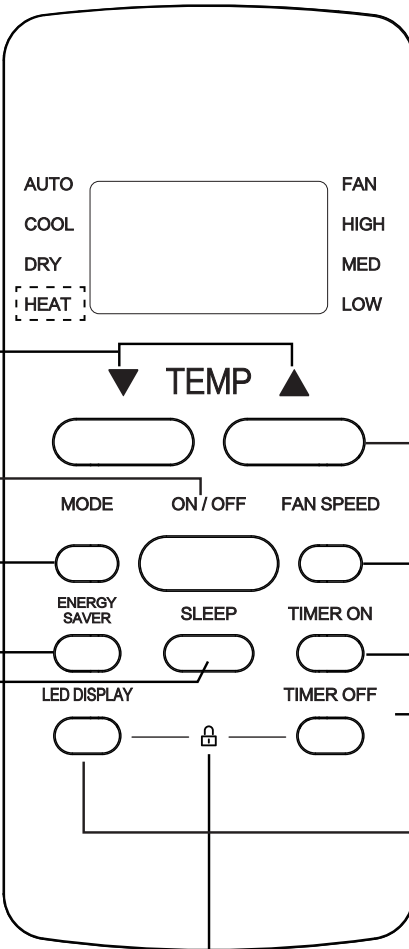
ON/OFF
Turns the unit on or off.

MODE
Scrolls through operation modes as follows:
AUTO → COOL → DRY → HEAT → FAN

NOTE: Please do not select HEAT mode if the machine you purchased is cooling only type. Heat mode is not supported by the cooling only appliance.

ENERGY SAVER
Press this button to activate the Energy saving mode. Press it again to stop the function.

SLEEP
Saves energy during sleeping hours.



TEMP ▲
Increases **temperature** in 1°F (1°C) increments. Max. temperature is 86° F (30°C).

NOTE: Press together ▲ & ▼ buttons at the same time for 3 seconds will alternate the temperature display between the °C & °F.

FAN SPEED
Selects fan speeds in the following order:
AUTO → LOW → MED → HIGH

TIMER ON
Sets timer to turn unit on (see How to Use Basic Functions for instructions).

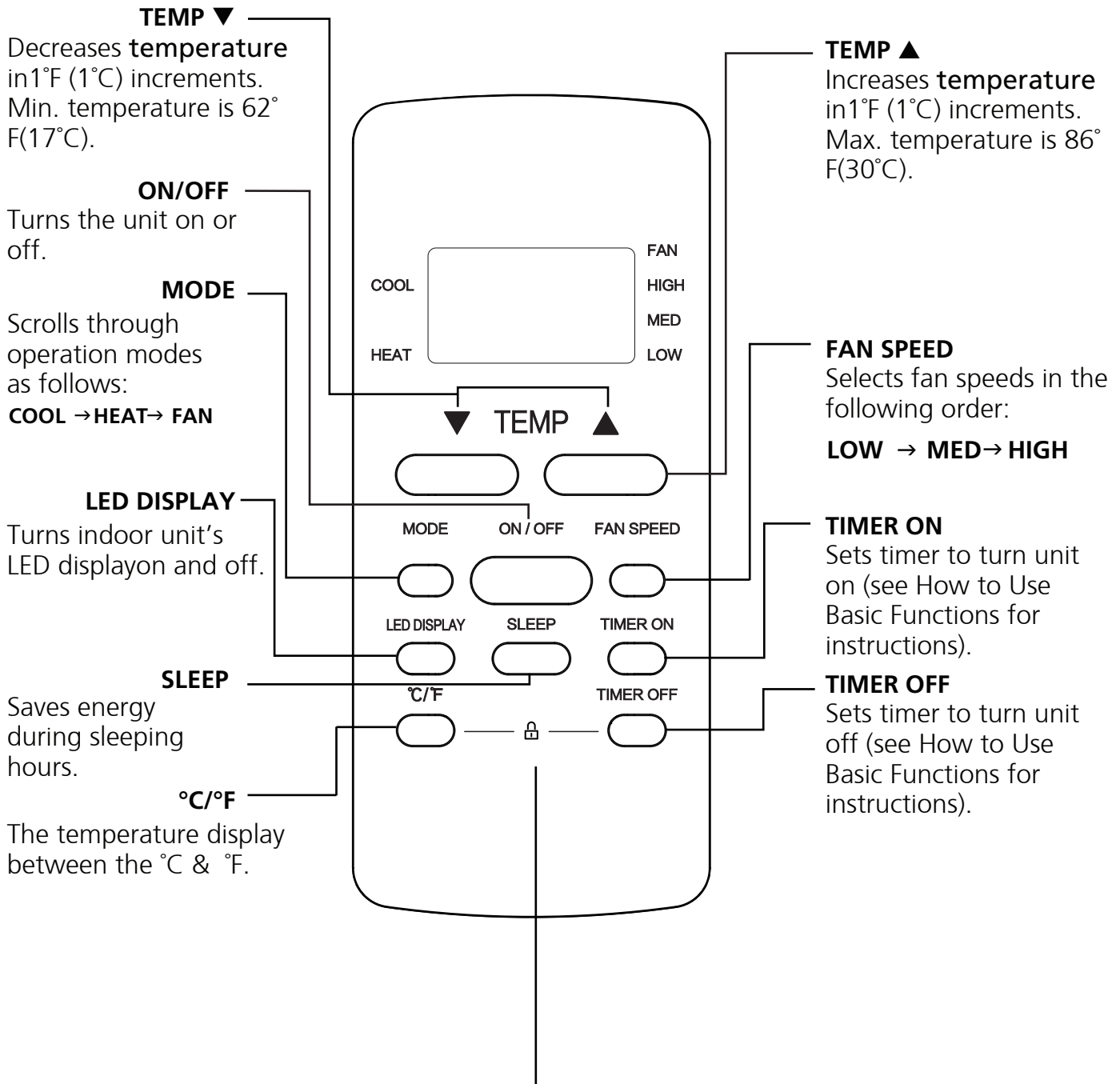
TIMER OFF
Sets timer to turn unit off (see How to Use Basic Functions for instructions).

LED DISPLAY
Turns indoor unit's LED display and air conditioner buzzer on and off (model dependent), which create a comfortable and quiet environment.

LOCK
Press together LED DISPLAY & TIMER OFF buttons simultaneously for 5 seconds to lock the keyboard. Press together the two buttons for 2 seconds to unlock the keyboard.

Model: RG51G4(1)/CEU1
RG51G4(1)/EU1

NOTE: Model RG51G4(1)/CEU1 does not have HEAT feature.



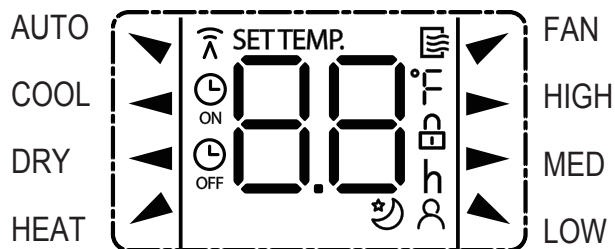
LOCK

Press together °C/°F & TIMER OFF buttons simultaneously for 5 seconds to lock the keyboard. Press together the two buttons for 2 seconds to unlock the keyboard.

RG51G5(1)/EU1

Remote Screen Indicators

Information is displayed when the remote controller is powered up.



Mode display

AUTO ▼ COOL ◀ DRY ◀
HEAT ▲ ▼ FAN



Displayed when data transmitted.



Displayed when remote controller is ON.



Displayed when TIMER ON time is set



Displayed when TIMER OFF time is set



Shows set temperature or room temperature, or time under TIMER setting



Indicated all the current settings are locked



Displayed when Follow Me feature is activated(some units)



Displayed when SLEEP feature is activated

Fan speed indication

▶ HIGH High speed
▶ MED Medium speed
▲ LOW Low speed
NO display Auto fan speed

Note:

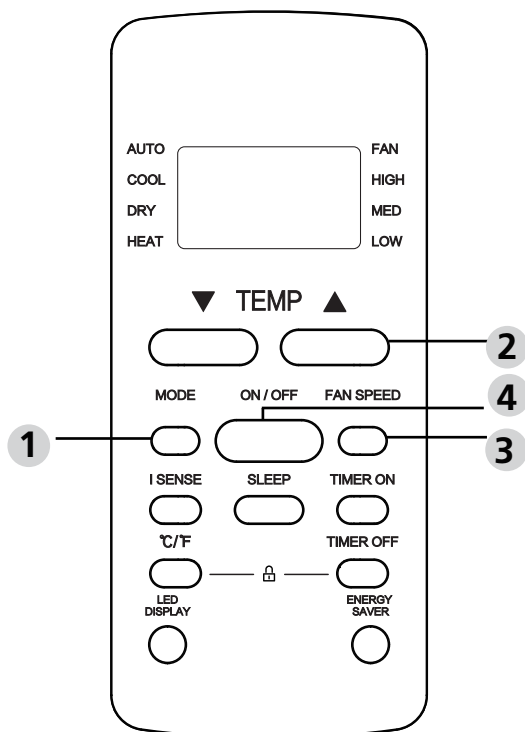
All indicators shown in the figure are for the purpose of clear presentation. But during the actual operation, only the relative function signs are shown on the display window.

How to Use Basic Functions

Basic operation

ATTENTION! Before operation, please ensure the unit is plugged in and power is available.

COOL Mode

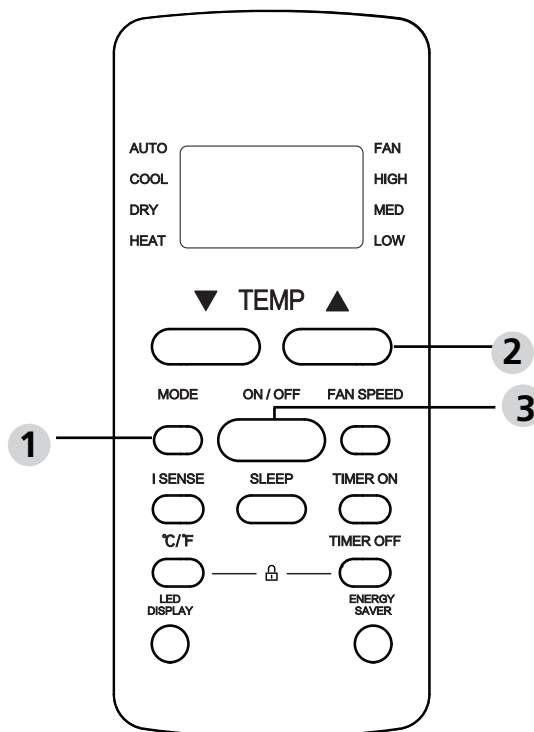


1. Press the **MODE** button to select **COOL** mode.
2. Set your desired temperature using the **TEMP ▲** or **TEMP ▼** button.
3. Press **FAN** button to select the fan speed: AUTO, LOW, MED or HIGH.
4. Press the **ON/OFF** button to start the unit.

SETTING TEMPERATURE

The operating temperature range for units is 62-86°F(17-30°C). You can increase or decrease the set temperature 1 °F(1°C) increments.

AUTO Mode



In AUTO mode, the unit will automatically select the COOL, FAN, or HEAT operation based on the set temperature.

1. Press the **MODE** button to select **AUTO**.
2. Set your desired temperature using the **TEMP ▲** or **TEMP ▼** button.
3. Press the **ON/OFF** button to start the unit.

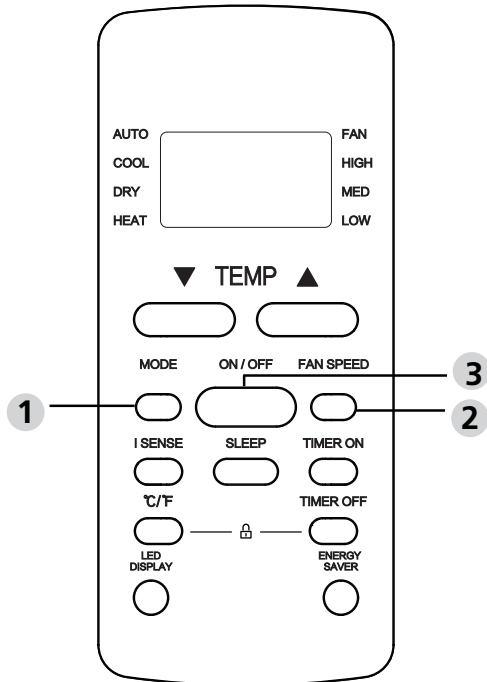
NOTE: FAN SPEED can't be set in AUTO mode.

In AUTO mode, the unit will automatically select the COOL, FAN, HEAT or DRY function based on the set temperature.

1. Press the **MODE** button to select **AUTO**.
2. Set your desired temperature using the **TEMP ▲** or **TEMP ▼** button.
3. Press the **ON/OFF** button to start the unit.

NOTE: FAN SPEED can't be set in AUTO mode.

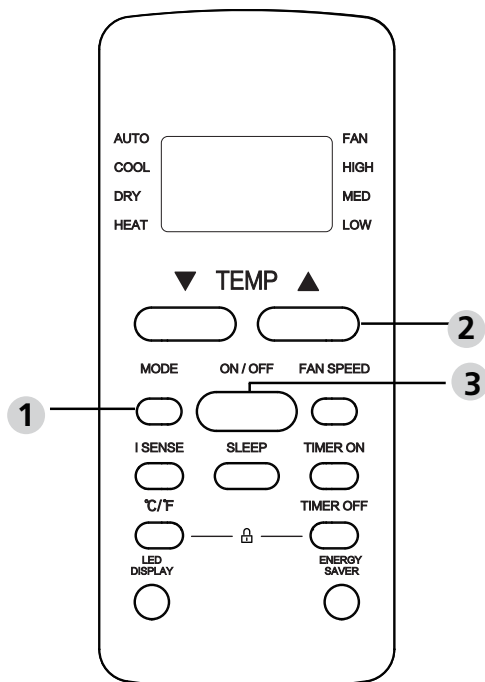
FAN Mode



1. Press the **MODE** button to select **FAN** mode.
2. Press **FAN** button to select the fan speed: AUTO, LOW, MED or HIGH.
3. Press the **ON/OFF** button to start the unit.

NOTE: You can't set temperature in FAN mode. As a result, your remote control's LCD screen will not display temperature.

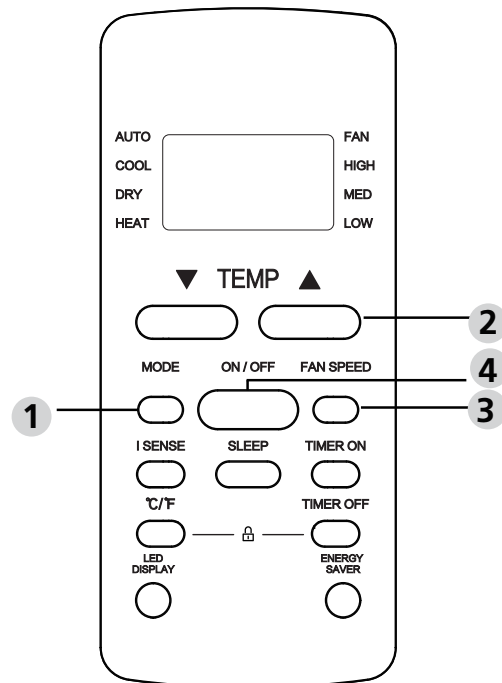
DRY Mode (dehumidifying)



1. Press the **MODE** button to select **DRY**.
2. Set your desired temperature using the **TEMP ▲** or **TEMP ▼** button.
3. Press the **ON/OFF** button to start the unit.

NOTE: FAN SPEED cannot be changed in DRY mode.

HEAT Mode (some models)



1. Press the **MODE** button to select **HEAT** mode.
2. Set your desired temperature using the **TEMP ▲** or **TEMP ▼** button.
3. Press **FAN** button to select the fan speed: AUTO, LOW, MED or HIGH.
4. Press the **ON/OFF** button to start the unit.

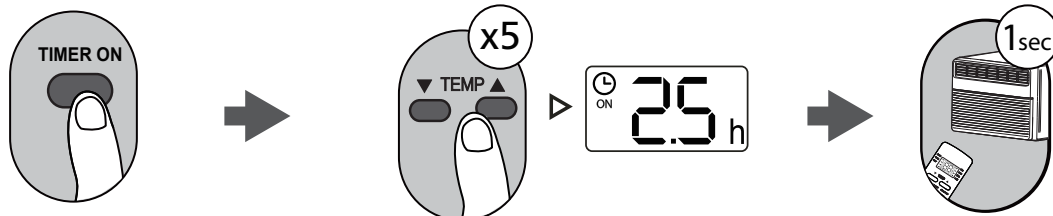
NOTE: As outdoor temperature drops, the performance of your unit's HEAT function may be affected. In such instances, we recommend using this air conditioner in conjunction with other heating appliances.

Setting the TIMER

TIMER ON/OFF - Set the amount of time after which the unit will automatically turn on/off.

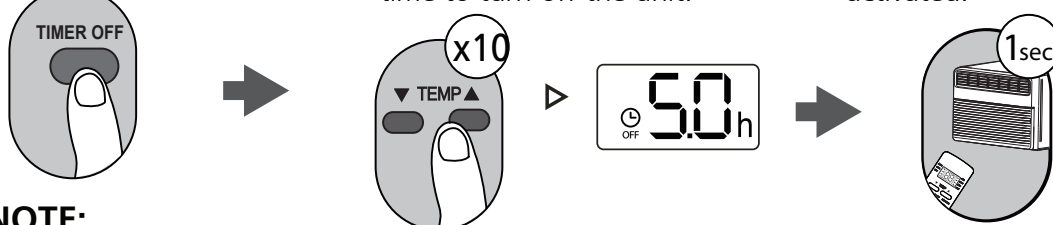
TIMER ON setting

Press **TIMER ON** button to initiate the ON time sequence. Press **Temp. up or down** button for multiple times to set the desired time to turn on the unit. Point remote to unit and wait 1sec, the **TIMER ON** will be activated.



TIMER OFF setting

Press **TIMER OFF** button to initiate the OFF time sequence. Press **Temp. up or down** button for multiple times to set the desired time to turn off the unit. Point remote to unit and wait 1sec, the **TIMER OFF** will be activated.

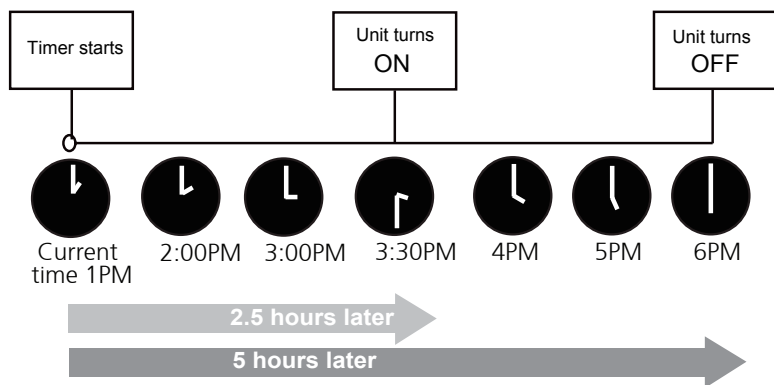
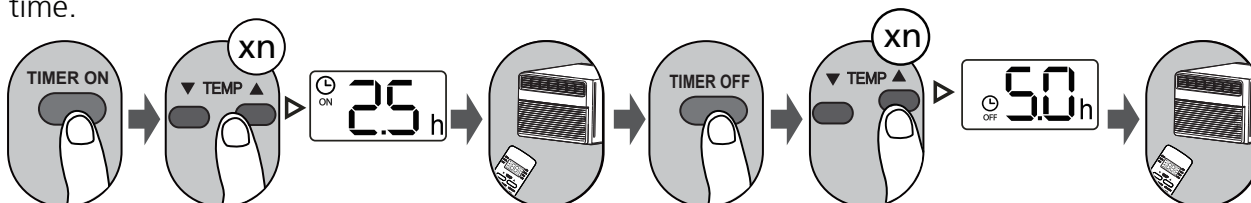


NOTE:

- When setting the **TIMER ON** or **TIMER OFF**, the time will increase by 30 minute increments with each press, up to 10 hours. After 10 hours and up to 24, it will increase in 1 hour increments. (For example, press 5 times to get 2.5h, and press 10 times to get 5h,) The timer will revert to 0.0 after 24.
- Cancel either function by setting its timer to 0.0h.

TIMER ON & OFF setting(example)

Keep in mind that the time periods you set for both functions refer to hours after the current time.

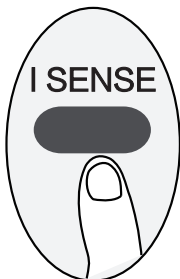


Example: If current timer is 1:00PM, to set the timer as above steps, the unit will turn on 2.5h later (3:30PM) and turn off at 6:00PM.

How to Use Advanced Functions

I SENSE (some models)

Press I SENSE button



When the I SENSE function is activated, the remote display **the** actual temperature at its location. The remote control will send this signal to the air conditioner every 3 minute intervals until **you** press the I SENSE button again.

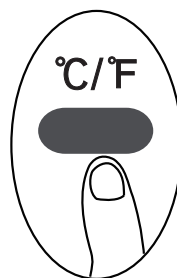
ENERGY SAVER function (some models)



Press Energy saver button to initiate this function.

This function is available on COOL, DRY, AUTO (only AUTO-COOLING and AUTO-FAN) modes.

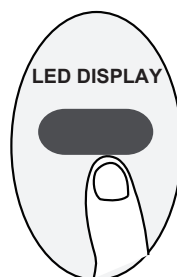
°C/°F (some models)



Pressing this button will alternate the temperature display between the °C & °F.

LED DISPLAY

Press LED button



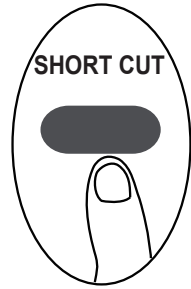
Press this button to turn on and turn off the display on the indoor unit.

FRESH (some models)



When the FRESH function is initiated, the Ionizer/Plasma Dust Collector (depending on models) is energized and will help to remove pollen and impurities from the air.

SHORTCUT function(some models)



Used to restore the current settings or resume previous settings.(For some models)

Push this button when remote controller is on, the system will automatically revert back to the previous settings including operating mode, setting temperature, fan speed level and sleep feature(if activated).

If pushing more than 2 seconds, the system will automatically restore the current operation settings including operating mode, setting temperature, fan speed level and sleep feature (if activated).

SLEEP function



The SLEEP function is used to decrease energy use while you sleep (and don't need the same temperature settings to stay comfortable). This function can only be activated via remote control.

The sleep function is not available in Fan or Dry mode.Please refer to the OWNER'S MANUAL for more details.

Due to ongoing product improvements, specifications and dimensions are subject to change and correction without notice or incurring obligations. Determining the application and suitability for use of any product is the responsibility of the installer. Additionally, the installer is responsible for verifying dimensional data on the actual product prior to beginning any installation preparations.

Incentive and rebate programs have precise requirements as to product performance and certification. All products meet applicable regulations in effect on date of manufacture; however, certifications are not necessarily granted for the life of a product. Therefore, it is the responsibility of the applicant to determine whether a specific model qualifies for these incentive/rebate programs.

Comfort-Cire[®]

1900 Wellworth Ave., Jackson, MI 49203 • Ph. 517-787-2100 • www.marsdelivers.com

